



Year 2 Welcome Meeting

Learning Together, Aiming High,
Proud to be Ourselves



Our School Rules

BE SAFE, BE KIND, BE RESPONSIBLE

Core Values

- Honesty
- Respect
- Curiosity
- Responsibility
- Fairness
- Curiosity

Our Learning Behaviours

- Reflective Owl
- Persevering Pig
- Resilient Rabbit
- Concentrating Cat
- Cooperating Caterpillar

Year Group Expectations

- Open door policy.
- If you have a problem or want to share something amazing, please contact the teacher.
- (Please allow children to exit first at end of the day before approaching class teachers)



Year Group Expectations

- Label all belongings. The children are responsible for their belongings.
- Remove ear-rings on PE Days (Tuesday and Thursday).
- Wear PE kit to school. Some sessions will be outdoors, so make sure children have appropriate clothing for colder weather.
- Expectation of 30 mins per task for homework- no longer. (Home Learning policy). Homework books should be kept as neat as books are in school.
- Children need to be responsible for their own belongings at the end of the day and to take everything downstairs. Please remind them to hand in **homework** and **home spelling books**.

Curriculum

Topics this year

- The UK = Learning about Braintree, the UK and coastal features
- Explorers = Polar Exploration, learning about continents, oceans and countries.
- Fur, Feathers, Fins and Feelers = Learning about animals and their habitats.
- Olympics = Learning about the importance of exercise and famous athletes.
- In science we will cover: living things and their habitats, plants, animals including humans and materials and their uses . The children learn how they can work scientifically.
- Alongside our topics, we will cover many aspects of the English curriculum through a variety of texts

Reading

- Regular reading is essential. Book bags must be in school every day.
- In Year 2, children will develop their confidence, accuracy, fluency and comprehension skills. These skills are essential in order for them to access the rest of the curriculum, as they progress through school.
- Even the most fluent readers need to be heard regularly.
- In school, your child will have the opportunity to read daily through whole class reading, guided reading and individual reading.
- Books will be changed in school on **Monday** and **Thursday**. This is more flexible as children begin to read much longer texts.
- Please remember to sign and date your child's reading record.

Phonics Screening

The National Phonics Screening was completed in Year 1 by all children . Children who did not achieve the required score, will complete the screening again in the summer term. They will continue to receive regular phonics teaching throughout the year.

Maths

- Emphasis on using models and images to support learning - using resources etc. Practical.
- Rapid recall of arithmetic skills e.g. times tables, number bonds - mental maths sessions in school teach these to build fluency
- Using and applying - apply the skills they have learnt in problem solving and the mastery curriculum
- Move on to challenges to embed and extend learning.
- Making maths relevant to our everyday lives.

English



- Emphasis on basic skills of writing e.g. correct tense, punctuation, grammar, word classes (nouns, verbs, adjectives, adverbs) and sentence types. Children begin to write at greater length.
- Handwriting - accurate letter formation. Children learn to join letters.
- Spelling - to spell the **Common Exception Words** in all written work. Also, spell words with common spelling patterns e.g. soft c in words like 'dice'.
- These skills are taught daily in school.

Spellings- Homework

30.4.21 Test Friday	Practise spelling this week's words. If you are confident with the first six, learn the challenge words too. If you are really confident with them all, try the Super Challenge words as well!
This Week's Words	coming going jumped looked liked time
Challenge	shouted stopped something
Super Challenge	laughed worried dancing

Every **Friday** the children will bring home spellings to learn. Spelling test day is **Friday**.

Children are expected to learn the 6 'This Week's Words'. These words are our 'Words of the Week' in class and we focus on the spelling of these words.

If your child is confident spelling the first 6 words, they can try the **Challenge** words. There is also a **spelling club** group for those children who may need different spellings matched to their ability.

**In the first two weeks,
the children will
complete spelling
assessments in class
before home spellings
begin.**

;

Homework

In Year 2, we set a homework task weekly, but this will vary. It might involve the children researching information about a topic, drawing a design, answering maths questions, completing some writing, producing a piece of art or working online on Mathletics.

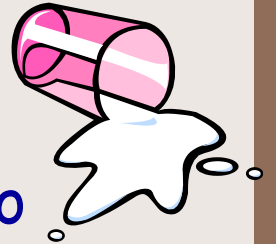


Remember:

- New homework is stuck into homework books each **Friday**.
- New spellings are stuck into home spelling books each **Friday**.
- Homework needs to be completed and in school on **Wednesday**.
- Home spelling books need to be back in school **before Friday**.
- We will remind children of this, but they need to develop independence and organisational skills as they get older.

Healthy Schools

- Named water bottle in school all year
- Asthma pumps labelled to teacher - office must be informed
- Any allergies or medical changes let office know
- Give any medicines to the office with labels and instructions for giving
- Health Care Plans - please return if necessary
- If child has sickness/diarrhoea please allow 48 hours of being clear of symptoms before returning to school
- We do send children out in most weathers so please ensure they have appropriate coats with them



Welcome to Year 2!

Any Questions?

